

Cardiovascular Risk in Patients who go to the Medical Office of a Private Health Center in North Lima

Jairo Zegarra-Apaza¹, Sara Oliveros-Huerta¹, Santiago Vilela-Cruz¹, Rosita Chero-Benites¹, Gissett Marcelo-Ruiz¹, Leslie Yelina Herrera-Nolasco¹, Brian Meneses-Claudio², Hernan Matta-Solis^{1,*}, Eduardo Matta-Solis³

¹Faculty of Health Sciences, Universidad de Ciencias y Humanidades, 15314, Lima-Perú

²Image Processing Research Laboratory (INTI-Lab), Universidad de Ciencias y Humanidades, 15314, Lima-Perú

³Health Sciences, Instituto Peruano de Salud Familiar, 15304, Lima-Perú

ARTICLE INFO

Article history:

Received: 03 August, 2020

Accepted: 12 January, 2021

Online: 30 January, 2021

Keywords:

Adolescents

Quality of life

Students

Health

Adolescent psychology

ABSTRACT

Cardiovascular diseases are the group of conditions produced in the heart or blood vessels. This is one of the main causes of death in Peru and the world, produced mostly by non-communicable diseases and harmful habits, which makes it an extremely predictable disease. These factors include body mass index, smoking, diabetes, age, blood pressure, total cholesterol, and high-density lipoproteins. Therefore, this study aims to identify patients who go to the medical office of a private health center in North Lima who do not have a prior history of a cardiovascular accident, using the cardiovascular risk calculator provided by the Organization World Health. The present research work had a quantitative, non-experimental, descriptive, and cross-sectional approach, in a population of 99 adult and elderly patients. Regarding the results, it was found that 46.5% presented a low cardiovascular risk, 37.4% a moderate risk, 11.1% a high risk and 5.1% an extremely high risk. The information found contrasts with the number of deaths caused by this disease and may be an indicator of greater prevention by populations with higher economic income. Finally, it is concluded that diabetes, smoking and the age group are predisposing factors to an increased cardiovascular risk.

1. Introduction

Cardiovascular risk is specified as the probability of a heart or blood vessel condition occurring [1]. The origin of cardiovascular diseases (CVD) is closely linked to harmful habits or non-communicable diseases, from which derives its progressive and highly predictable nature [2].

According to the Framingham Heart Study, conducted from 1948 to the present, the main predictors of a CVD are age, body mass index, HDL and total cholesterol, smoking, diabetes, and treated high systolic blood pressure or untreated [3], [4]. Therefore, these predictors are also connected to illnesses and harmful habits, present and increasing mainly in developed and developing countries.

In Peru, according to data collected by the Instituto Nacional de Estadística e Informática (INEI), from 2015 to 2018 the Peruvian population has had an annual increase in cases with high blood pressure (14.8%), diabetes mellitus (3.9%) and obesity

(23%), which are mainly concentrated in Lima, while cases of overweight (37%), cigarette consumption (19%) and daily cigarette consumption (1.7%) make up almost constant in the years of study [5]. Likewise, its importance in relation to cardiovascular risk (CVR), death attributed to diabetes also increased [6], which gives an indication of inefficient control of the disease. Consequently, as mentioned above, each year the cardiovascular disease (CVD) threat is amplified and the people with the longest longevity are affected.

On the other hand, in [7], a study was carried out in Peruvian youth and adults between 20 and 59 years old who were users of popular dining rooms, these premises being focused on food supply in areas of poverty and extreme poverty. The research found a prevalence of abdominal obesity (51.6%), low HD-C (42.2%), hypertriglyceridemia (35.3%), overweight (35.8%), high blood pressure (21.0%) and hyperglycemia (14.1%), thus conforming an overall metabolic syndrome of 40.1%. This not only allows to infer that the state of this type of population makes them prone to CVD, but also without a preventive measure that takes an active role in the search for these patients, the risk will

*Corresponding Author: Hernan Matta-Solis, Mr., +51 1 999751065 & hmatta@uch.edu.pe

www.astesj.com

<https://dx.doi.org/10.25046/aj060168>

probably not be reduced until they are close to suffering a condition of this type, because despite having insurance focused on low-income populations, regular visits in search of prevention are not usually integrated in Peru.

In the study [8], carried out in a public hospital for internal medicine inpatients, vascular age and cardiovascular risk were evaluated in 238 participants who were between 30 and 74 years old without previous cardiovascular events. The objective was to determine these variables as well as the predominant risk factor. This study concluded with a medium and high cardiovascular risk in the highest percentage of the population, a difference between chronological and vascular age of 6.9 years old, and finally, diabetes and male sex were identified as predominant factors.

According [9], a research carried out in Spain, they were able to note that heart disease is the main cause of morbidity in a tertiary hospital and men between 50 and 60 years old are the ones with the highest morbidity in this pathology, causing high rates of incapacity for work, in addition the problem goes beyond the hospital setting because these patients will require cardiac rehabilitation. They also point out that emphasis should be placed on prevention, since studies have documented that of the patients who were discharged, 75% of patients re-entered for any cardiac complication.

In [10], a study was carried out in an educational institution of 100 schoolchildren from 10 to 19 years old, with the aim of determining cardiovascular risk. The study found a prevalence of cardiovascular risk of 84.6% in adolescents (15-18 years old), as well as that the consumption of alcoholic beverages and unhealthy eating habits are related to the increase in cardiovascular risk. So, it is suggested that prevention from an early age is essential to reduce its appearance in more advanced stages of life.

The objective of this research work is to identify cardiovascular risk in patients with no prior history of CVD, excluding hypertension in untreated cases, and who go to a cardiology office in a private health center, using a calculator provided by the Organization. Pan American Health (PAHO). Because of having an alteration in the cardiovascular system that is not a serious alteration, patients of the cardiology service are one of the groups to be suspected of having a cardiovascular condition that may cause irreversible damage or death of the patient.

The instrument used in this study is the CVR calculator provided by PAHO, based on a form proposed by the World Health Organization (WHO) to evaluate CVR in Latin American and Caribbean countries [11]. This instrument uses a risk score that is based on the Framingham study, which also is adapted to the characteristics of the region and these data will be processed in matrix form by the IBM SPSS statistics 25 program. This application deals with to assess CVR quickly and easily in patients, which is mainly focused as an aid to medical health personnel, but due to the simplicity of its use, this can be a great option for the recruitment of risk patients who are in areas that are difficult to access or that lack medical personnel.

The organization of the work carried out is structured in the following way: in Section II, the development carried out for the identification of cardiovascular risk in patients who go to the medical office will be found. In section III, it will find the results

of the data collected for the measurement, as well as the most relevant values of the CVR found. In section IV, the discussion of the research work and finally in section V, the conclusions, as well as the expectations that are had for the use of this research work.

2. Methodology

This section is made up of the process followed for the cardiovascular risk assessment, which are: data acquisition, data processing and finally the results with their corresponding risk values. The steps in carrying out the cardiovascular risk assessment are represented in a flowchart in Figure 1. All this was passed through the ethics committee, to give the authorization for the research work, followed by the ethical principles in part for the study in patients, such as beneficence, autonomy, non-maleficence, and justice.

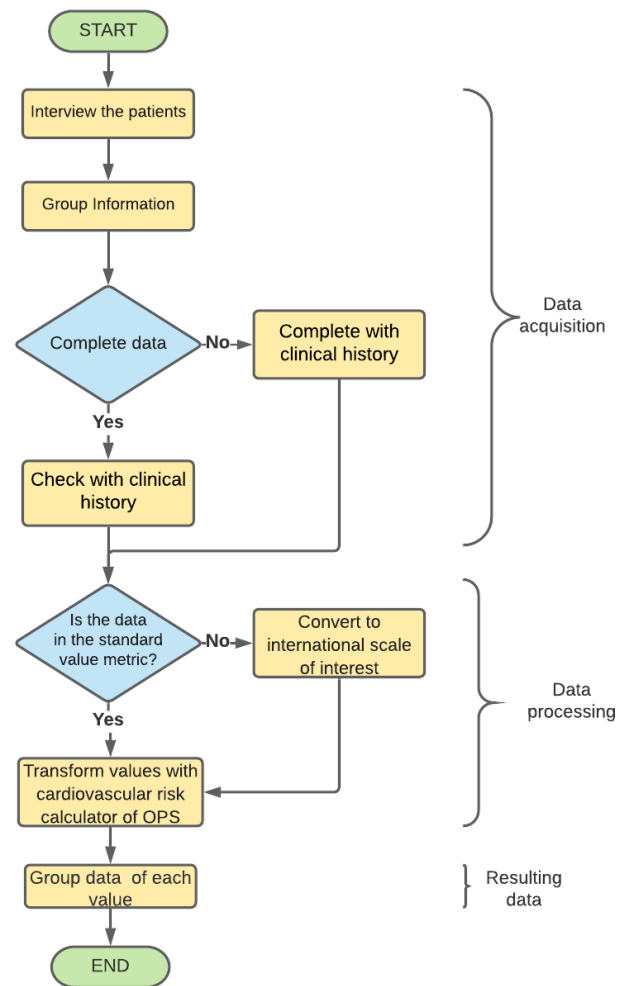


Figure 1: Flowchart for cardiovascular risk data collection

2.1. Data Acquisition

This study has a quantitative, non-experimental, descriptive, and cross-sectional approach. For the acquisition of the data, coordination was required with a private polyclinic located in the jurisdiction of North Lima, in which the patients of the cardiology service were evaluated in the first quarter of the year. Likewise, the data collected in the research work was cataloged in

sociodemographic data of the patient and descriptive parameters of cardiovascular risk, the subdivisions are shown in Table 1.

Table 1: Sociodemographic data and descriptive parameters of cardiovascular risk of people from a cardiology clinic of a Private Polyclinic in North Lima

Sociodemographic Data	Gender
	Degree of instruction
	Occupation
Descriptive parameters of cardiovascular risk	Maximum / Systolic Pressure
	Smoking
	Total cholesterol
	Diabetes
	Age

Population and Sample

The population is made up of 110 adult patients (49-59) and older adults (60 or more) from the jurisdiction of the health center, but the sample size was made reaching 99 since the remaining patients did not want to participate voluntarily in the study.

Inclusion and Exclusion Criteria

The inclusion criteria that were considered at the time of data collection were: Patients who are between the ages of 49 and 79, who have high blood pressure, who are continuing or go to medical office more than once, who belong to the jurisdiction of the polyclinic and agree to participate voluntarily in the study.

In addition, the exclusion criteria corresponding to the study were: patients who depended on a wheelchair for mobilization and those who suffered from cognitive or hearing impairment.

2.2. Data Processing

The data corresponding to the descriptive parameters of cardiovascular risk were transformed into the international system of measurement units that were adequate or preferable for the measurement of each parameter and subsequently entered the cardiovascular risk calculator provided by PAHO that takes place during the month of November. These data were cataloged by the calculator according to the percentage of CVR of the patient suffering from a cardiovascular condition in the subsequent 10 years corresponding to the table displayed in Figure 2.

The table displayed in Figure 2 subdivides cardiovascular risk into 5 subsectors, relating them to one color according to the range of cardiovascular risk that occurs, these being: green, for a CVR <10%, yellow for a CVR from 10% to <20%, orange from 20% to <30%, red from 30% to <40% and dark red for values > 40%.

Likewise, the acquired data were entered in matrix form to the IBM SPSS Statistics 25 software, for subsequent management and analysis. The variables considered for data analysis are ID, gender, degree of institution, family type, occupation, smoking, diabetes, maximum systolic pressure, total cholesterol, cardiovascular risk, age, and Age 2, these two being the last ages corresponding to the adult and older adult age groups.

The participation of health personnel in the process of obtaining data is significant due to the complications that may arise due to the patient's lack of knowledge regarding the topic corresponding to each variable, the patient's mistrust of a person who do not work in the public health service, as well as greater efficiency in the collection of data in the clinical history and in the reliability when measuring the value of blood pressure.

3. Results

99 adult and elderly patients from the cardiology service were evaluated in the first quarter of the year. Sociodemographic data and descriptive parameters of cardiovascular risk were identified in each of them, as shown in Tables 2, 3 and 4.

Table 2: Sociodemographic data of patients from a cardiology clinic of a Private Polyclinic in North Lima

Sociodemographic data	N	%
Age ^{1/}		
Adult	57	57.6%
Older adult	42	42.4%
Gender		
Female	35	35.4%
Male	64	64.6%
Degree of instruction		
Illiterate	2	2.0%
Primary	16	16.2%
Secondary	73	73.7%
Technical	5	5.1%
University	3	3.0%
Occupation		
Does not work	17	17.2%
Retired	10	10.1%
Laborer	12	12.1%

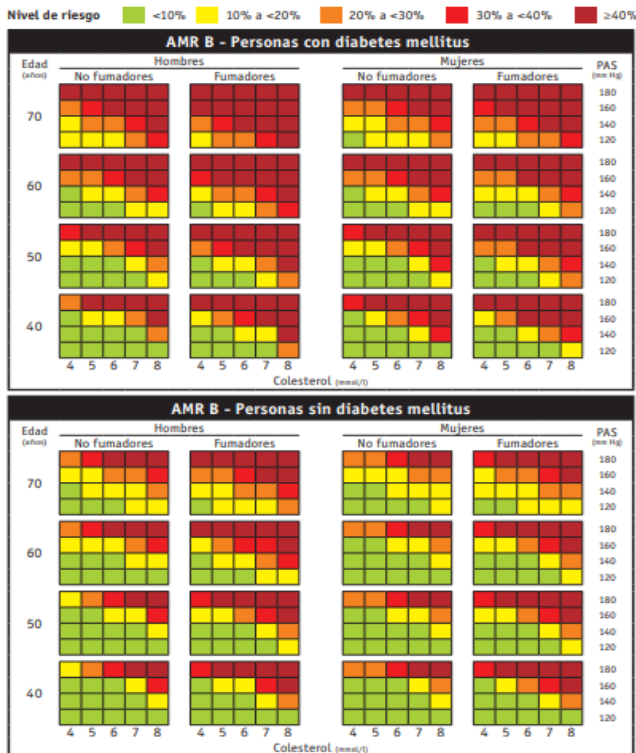


Figure 2: WHO/ISH AMR B risk prediction table, for settings in which blood cholesterol can be measured

Employee	15	15.2%
Informal work	45	45.5%
Total	99	100.0%

^{1/}Mean = 57.7; Standard Deviation (SD) = 11.08

These results indicate that the mean age of the patients was 57.7 years, the majority being adults representing 57.6%, likewise, 64.6% were men, 73.7% had a secondary level, 45.5% worked informally and 35.4% have an extended family as shown in Table 2.

Table 3: Cardiovascular risk parameters in patients of a cardiology office of a Private Polyclinic in North Lima

Cardiovascular risk parameters	□ ± SD ^{1/}	
Maximum Systolic Pressure (mmHg)	132.9	11.6
Total Cholesterol (mg/dL)	225.6	22.4
Smoking	N	%
Yes	52	52.5%
No	47	47.5%
Diabetes		
Yes	84	84.8%
No	15	15.2%

^{1/} Mean (□); Standard Deviation (SD)

Table 3 shows that the mean maximum systolic pressure was 132.9 mmHg, and the mean total cholesterol was 225.6 mg/d. On the other hand, 52.5% were smokers and 84.8% had diabetes.

Table 4: Cardiovascular risk and descriptive parameters of cardiovascular risk

			Cardiovascular Risk				Total
			Low	Moderate	High	Very High	
Age group	Adult	N	34	20	3	0	57
		%	34.3%	20.2%	3.0%	0.0%	57.6%
	Older adult	N	12	17	8	5	42
		%	12.1%	17.2%	8.1%	5.1%	42.4%
Smoking	Yes	N	15	24	10	3	52
		%	15.2%	24.2%	10.1%	3.0%	52.5%
	No	N	31	13	1	2	47
		%	31.3%	13.1%	1.0%	2.0%	47.5%
Diabetes	Yes	N	34	36	10	4	84
		%	34.3%	36.4%	10.1%	4.0%	84.8%
	No	N	12	1	1	1	15
		%	12.1%	1.0%	1.0%	1.0%	15.2%

Table 4 shows that: adults are 57.6%, with 34.3% belonging to a low CVR, while older adults are 42.4%, and their CVR is mostly moderate with 17.2%; those who smoke make up 52.5% of the population, their CVR being mostly moderate with 24.2%, while those who do not smoke make up 47.5% and their CVR is mostly

low with 31.3%; finally, those with diabetes make up 84.8% of the population and their CVR tends to be moderate with 36.4% or low being 34.3%, while those without diabetes make up 15.2% and most of them have a low CVR representing the 12.1%. These data help to deduce the trend of cardiovascular risk in relation to its risk factors in private health center.

On the other hand, the chi square results were 0.001 for the age group and cardiovascular risk, 0.027 for diabetes and cardiovascular risk, and 0.001 for smoking and cardiovascular risk for P <0.05, confirming that the differences in the proportions observed between the two groups are statistically significant. These results allow to identify the relationship of risk factors with cardiovascular risk in populations that go to a private health center, as well as to differentiate their situation from the current situation in Peru.

Table 5: Cardiovascular risk in patients of a cardiology office of a Private Polyclinic in North Lima

Cardiovascular Risk	N	%
Extremely high Risk	5	5.1%
High Risk	11	11.1%
Moderate Risk	37	37.4%
Low Risk	46	46.5%
Total	99	100.0%

Table 5 shows that 46.5% of adult and elderly patients presented a low cardiovascular risk, 37.4% a moderate risk, 11.1% a high risk and 5.1% an extremely high risk.

The knowledge of these results is important because it will allow to identify cardiovascular risk in patients with no prior history of CVD, and it also helps to know the risk factors to which many people, such as smokers, are exposed. This information allows to realize that the greater control there is over risk factors, whether through a change in lifestyle (healthy eating, playing sports, etc.), the less likely there is to have cardiovascular risk.

4. Discussion

The results confirm that there is a significant relationship between smoking, age group and diabetes with cardiovascular risk, thus agreeing with the findings of the Framingham heart study.

On the other hand, the prevalence of CVR found is mostly belonging to a low-risk one, in other words, a population that has a less than 10% risk of suffering cardiovascular disease in the next 10 years, which contrasts significantly with the analysis carried out in [12], which lists circulatory diseases as the third cause of death for large groups and cardiac ischemia as the second cause of death. As it is a private health center, it can indicate a greater emphasis on prevention by a sector of the population with higher economic incomes.

Peru is a developing country where child malnutrition and respiratory diseases are still considered highly relevant problems and their financing is a high priority. For this reason, this research is not only focused on identifying the status of patients entering

cardiology offices, but also on the scientific contribution, because its use is also expected to promote the use of this instrument for the early recruitment of patients, both by health personnel and residents through self-evaluation, because due to its easy access and simplicity it can mean a great advance for the prevention of cardiovascular diseases, in a country where, as declared in [13], self-knowledge, adherence or control of hypertension are still below to other Latin American countries.

5. Conclusions

It is concluded that in patients who go to the medical office of the private health center in North Lima, diabetes, smoking and the age group are predisposing factors to increased cardiovascular risk in patients.

It is also concluded that the majority were adults, with a secondary institution degree and who work informally. As well as 5 out of 10 patients were smokers and 8 out of 10 had diabetes.

Finally, it is concluded that cardiovascular diseases are made up of a series of characteristics that can be regulated to prevent a cardiovascular risk, such as smoking, diabetes, total cholesterol, and maximum systolic pressure. As well as that the problem increases in relation to the old age of the population and therefore measures should be taken focused on these age groups.

This research work was studied to contribute to the lack of scientific information with the use of the PAHO cardiovascular risk calculator, in addition to promoting its use in the Peruvian community nursing setting for the recruitment of risk patients, because despite having problems such as malnutrition in the child population, the obstacle that CVDs pose to life expectancy in adults and older adults cannot be ignored.

The Strength in our research work is teamwork to be able to carry out this research work

The limitation in the research work is access to people to be in the study, since many of them mentioned that they preferred to enter their consultations than to be in the study.

Conflicts of Interest

The authors declare no conflict of interest.

References

- [1] M. Arboleda, A. García, "Riesgo cardiovascular: análisis basado en las tablas de Framingham en pacientes asistidos en la unidad ambulatoria 309, IESS – Sucúa," *Revista Med*, **25**(1), 20–30, 2017, doi:10.18359/rmed.1949.
- [2] J. Álvarez, A. Álvarez, W. Carvajal, M. González, J. Duque, O. Nieto, "Determinación del riesgo cardiovascular en una población.," *Revista Colombiana de Cardiología*, **24**(4), 334–341, 2017, doi:10.1016/j.rccar.2016.08.002.
- [3] R. D'Agostino, R. Vasan, M. Pencina, P. Wolf, M. Cobain, J. Massaro, W. Kannel, "General cardiovascular risk profile for use in primary care: The Framingham heart study," *Circulation*, **117**(6), 743–753, 2008, doi:10.1161/CIRCULATIONAHA.107.699579.
- [4] J. Alvarez, V. Bello, G. Pérez, O. Antomarchi, M. Bolívar, "Factores de riesgo coronarios asociados al infarto agudo del miocardio en el adulto mayor.," *Medisan*, **17**(1), 54–60, 2013.
- [5] Instituto Nacional de Estadística e Informática, Peru, *Enfermedades No Transmisibles Y Transmisibles*, 2018.
- [6] N. Atamari, M. Ccorahua, A. Taype, C. Mejia, "Mortalidad atribuida a diabetes mellitus registrada en el Ministerio de Salud de Perú, 2005-2014," *Revista Panamericana de Salud Pública*, **42**, 1–7, 2018, doi:10.26633/rpsp.2018.50.
- [7] K. Adams, J. Chirinos, "Prevalencia de factores de riesgo para Síndrome

- Metabólico y sus componentes en usuarios de comedores populares en un distrito de Lima, Perú," *Revista Peruana de Medicina Experimental y Salud Publica*, **35**(1), 39–45, 2018, doi:10.17843/rpmesp.2018.351.3598.
- [8] J. Mayta, A. Morales, A. Cárdenas, J. Mogollón, V. Armas, L. Neyra, C. Ruíz, "Determinación de riesgo cardiovascular y edad vascular según el score de Framingham en pacientes del Hospital Nacional Arzobispo Loayza," *Horizonte Med*, **15**(2), 27–34, 2015, doi:10.1520/stp30190s.
 - [9] A. Sánchez, M. Bobadilla, B. Dimas, M. Gómez, G. González, "Enfermedad cardiovascular: primera causa de morbilidad en un hospital de tercer nivel.," *Revista Médica de Cardiología*, **27**(3), 98–102, 2016.
 - [10] C. Torres, D. Illera, D. Acevedo, M. Cadena, L. Meneses, P. Ordoñez, L. Pantoja, M. Pastás, "Riesgo cardiovascular en una población adolescente de Timbío, Colombia," *Revista de La Universidad Industrial de Santander. Salud*, **50**(1), 59–66, 2018, doi:10.18273/revsal.v50n1-2018006.
 - [11] OPS/OMS, *Calculadora de riesgo cardiovascular*, Organización Panamericana de La Salud - Uruguay.
 - [12] Ministerio de la Salud, ASIS-R: *Análisis de Situación de Salud de los Gobiernos Regionales*, 120, 2019.
 - [13] P. Herrera, J. Pacheco, G. Valenzuela., G. Málaga, "Autoconocimiento, Adherencia al tratamiento y control de la Hipertensión Arterial en el Perú: una versión narrativa.," *Revista Peruana de Medicina Experimental y Salud Publica*, **34**(3), 497–504, 2017, doi:10.17843/rpmesp.2017.343.2622.