

Theoretical Investigation of Combined Use of PSO, Tabu Search and Lagrangian Relaxation methods to solve the Unit Commitment Problem

Sahbi Marrouchi*, Nesrine Amor, Moez Ben Hessine, Souad Chebbi

Laboratory of Technologies of Information and Communication and Electrical Engineering (LaTICE), National Superior School of Engineers of Tunis (ENSIT), University of Tunis, 5 Street Taha Hussein Montfleurie, 1008 Tunis, Tunisia

ARTICLE INFO

Article history:

Received: 30 November, 2017

Accepted: 15 January, 2018

Online: 02 February, 2018

Keywords:

Unit commitment

Optimization methods

Scheduling

TS-PSO-LR

ABSTRACT

Solving the Unit Commitment problem (UCP) optimizes the combination of production units operations and determines the appropriate operational scheduling of each production units to satisfy the expected consumption which varies from one day to one month. Besides, each production unit is conducted to constraints that render this problem complex, combinatorial and nonlinear. In this paper, we proposed a new strategy based on the combination three optimization methods: Tabu search, Particle swarm optimization and Lagrangian relaxation methods in order to develop a proper unit commitment scheduling of the production units while reducing the production cost during a definite period. The proposed strategy has been implemented on a the IEEE 9 bus test system containing 3 production unit and the results were promising compared to strategies based on meta-heuristic and deterministic methods.

1. Introduction

The main role of energy management is to ensure the production of active power in order to respond to the demand growth among a very little fuel cost [1,2]. Solving the Unit Commitment Problem (UCP) is very essential in electrical network planning. It can both optimize the daily operational planning of networks and reduce the total production cost among the improvement of the operating state of each unit leading to obtain the best unit commitment scheduling helping to respond to the power demand. Operations scheduling production units or Unit Commitment (UC) improve operational planning of the electrical grid while ensuring continuity of service [1-6]. The main purpose of solving the Unit Commitment problem is to schedule production units to respond to the consumed power with the minimization of the total production cost. The optimal planning [7-9] involves ensuring a better use of available generators subject to various constraints and guaranteeing the transfer of electrical energy from generating stations to the load. UC must satisfy the load demand,

storage capability, minimum downtime startup and safety limits for each production unit.

The production scheduling comprises determining startup and each generation level for each unit in a given planning period [10-13]. Therefore, a study of literature [14,15] on methods which focus on unit commitment (UC) problem resolution shows that various optimization methods have examined this subject. Furthermore, Sasaki et al. demonstrated the possibility to use artificial neural network (ANN) to solve the UCP in which a large number of inequality constraints is processed. They have used the ANN to schedule generators and the dynamic programming to solve the load flow problem. The adopted strategy was compared to Lagrangian Relaxation (LR) and dynamic programming (DP) methods and the results offered a faster and cheaper solution compared to the LR and DP but it suffers from digital convergence because of the learning process. Certain works [16, 17] proposed a strategy based on tabu search method. They introduced new rules to generate an initial solution feasible to solve the Unit Commitment problem. This strategy consists on dividing the problem into two problems: the first combinatorial optimization problem is solved using tabu search algorithm and the second is a problem of nonlinear programming solved through the quadratic

*Corresponding Author: Sahbi Marrouchi, National Superior School of Engineers of Tunis (ENSIT), University of Tunis, Tunisia
Email: sahbimarrouchi@yahoo.fr

programming routine. The structure resolution through Tabu search method is similar to that used by simulated annealing [18] even though TS is provided with a simplified configuration, so it is easy to pass from one optimization to the other. Indeed, the main advantage of the adopted strategy is to extend the search space provided for the best optimal solutions which are stored in the tabu list. This method has provided a lower production cost solution, but it's slower compared to the Lagrangian relaxation. However, T. Logenthiran et al. [19] have proposed a new approach based on particle swarm optimization (PSO) algorithm for solving the unit commitment problem. They presented three versions of particle swarm: binary particle swarm optimization (BPSO), improved binary particle swarm optimization (IBPSO) and combined use of particle swarm optimization and Lagrangian relaxation programming (LR-PSO). The numerical results show that LR-PSO method has provided a lower production cost solution compared to LR, BPSO and IBPSO especially when the number of units important. Whereas, if the number of units is small, BPSO is taken as the best method since it has the lowest production cost compared to other algorithms. Other works, [20, 21] presented new approaches based on artificial intelligence to solve the UCP. The adopted approach combines two methods: tabu search and neural networks (ANN-TS) in order to get an optimal unit commitment scheduling allowing a minimal production cost in accordance to the constraints of the studied system. Artificial Neural networks provide a fast convergence to optimal solutions but it takes a lot of memory space because of the great number of constraints.

Cheng et al. [22] proposed a hybrid method based on the integration of the genetic algorithm in Lagrangian Relaxation Programming (LR-GA) to solve the problem of the planning of the operations of the production units. This integration consists in improving the Lagrange multipliers using the operators of the genetic algorithm to find a fast and an effective cost solution respecting all the constraints of the system. The implementation of this method requires two steps ; the first is to look for the minimum constraints of the Lagrange function under the multipliers constraint through dynamic programming. The second step consists on maximizing Lagrange's function while respecting the multiplier adjusted by the genetic algorithms. The experimental result of this method provides a faster and cheaper solution compared to the Lagrangian relaxation method (LR) and the tabu search method (TS). However, C. Christober et al. [23] presented a hybrid method combining the evolutionary programming the tabu search methods (EP-TS). The first has the advantage of a good convergence property, a significant acceleration based on the principle of traditional genetic algorithm and a high quality of solutions, but its major disadvantage is related to the dimensioning of the Unit Commitment problem. Tabu search method improves the status by avoiding imprisonment in the local minimum. The best solution is chosen by evolutionary strategy. Thus, the effort has been made to combine these two methods whose purpose is to meet the requirements of the generators commitment problem. The numerical results demonstrate that this method is efficient and accurate in terms of calculation time and minimization of the total production cost compared to the following methods: simulated annealing, taboo search, dynamic programming, evolutionary programming, Lagrange programming and LR- GA. By contrast, Kumar et al. [24] presented a hybrid method combining dynamic programming with Hopfield Neural Networks (DP-HNN). The

proposed process consists on two steps: use of Hopfield neural networks from direct computation to generate the economic distribution (ED) and use of dynamic programming (DP) to plan generators. This approach provides a poor final solution in total of production cost over other methods, but is faster than LR, DP, GA, LR-GA and AS-GA. In addition, C. Asir et al. [25] presented a new approach based on artificial intelligence to solve the problem of allocation of units. This combines two methods: tabu research and Artificial Neural Networks (ANN-TS) and this in order to have an optimal solution that solves the problem of planning power with a minimum of total production cost with respecting all the constraints of the specified system. Neural networks provide a fast convergence solution but the programming of the algorithm takes up a lot of memory space because of the constraints of the problem. The tabu search is characterized by the flexibility of its memory and it is able to find good solutions. This algorithm gave a faster and cheaper result compared to tabu search, dynamic programming, Artificial neural networks, Lagrange programming, LR-GA, TS-GA and EP-TS methods. In addition, C. Asir [26] has developed another strategy which consists in integrating the tabu search with the genetic algorithm. The purpose of this technique is to find the planning of the production. This strategy depends on the exploitation of the total cost which can be minimized when it is subjected to a set of constraints. Tabu search can find good solutions using the tabu list while genetic algorithm is used to generate new solutions using its operators. The results demonstrate that this technique provides a low cost but slow solutions compared to ANN-TS. Alma et al. [27] proposed a hybrid approach combining fuzzy logic and the genetic algorithm (FL-AG) to solve the Unit Commitment problem. Genetic algorithm uses the actual coded chromosomes in contradiction with the most commonly used scheme which is binary coding. This method uses a strict priority order list in the genetic algorithm that generates different solutions. This list serves to reduce the size of the search space of the problem, while fuzzy optimization guides the entire search process in an uncertain environment (varying from load demand, renewable energy sources etc ...).The results of this technique offer a good final solution compared to dynamic programming and to the genetic algorithm.

According to our study, we thought to validate an approach to apprehend the whole unit commitment problem. To achieve this objective, our strategy for solving the Unit Commitment Problem is based on the combination of three stochastic optimization methods that are the Particle Swarm Optimization (PSO), the Tabu Search (TS) and Lagrangian Relaxation (LR) method in order to develop a proper unit commitment scheduling of the production units to minimize the production cost.

2. Notation

The notation used throughout the paper is stated below.

a_i, b_i, c_i : Coefficients of the production cost,

P_{ih} : Active power generated by the i^{th} unit h^{th} hour,
 $i = 1, 2, 3, \dots, N_g$ and $h = 1, 2, 3, \dots, H$

U_{ih} : On/Off status of the i^{th} production unit at the h^{th} hour,
 $U_{ih} = 0$ for the off state of one generating unit and $U_{ih} = 1$ for the operating status of one generating unit,

- HSC_i : Hot start-up cost of the i^{th} unit,
- CSC_i : Cold start-up cost of the i^{th} unit,
- P_{rh} : System spinning reserve at the h^{th} hour,
- P_{dh} : Amount of the consumed power at the h^{th} hour,
- P_{Lh} : Total active losses at the h^{th} hour,
- P_i^{min} : Minimum and maximum power produced by one generator,
- P_i^{max} : Maximum power produced by one generator,
- MUT_i : Continuously on-time of unit i .
- MDT_i : Continuously down-time of unit i .
- τ_i^{OFF} : Continuously off-time of unit i ,
- SC_i : Cold start time of unit i .
- N_g : Number of generating units,
- H : Time horizon for UC (h).

3. Problem Formulation

Many works have been based on an analytical statement of the unit commitment problem [2,3,11, 18, 22]. We present in this paper a mathematical model of the unit commitment problem with limited security. This model is a mixed linear and constrained which has been adapted in several works [3, 9, 13, 15].

$$Min \left[F_T(P_{ih}, U_{ih}) = \sum_{i=1}^{N_g} \sum_{h=1}^H [a_i P_{ih}^2 + b_i P_{ih} + c_i + ST_i(1 - U_{i(h-1)})] U_{ih} \right] \quad (1)$$

Where;

ST_i : The starting cost of the i^{th} unit defined by:

$$ST_i = \begin{cases} HSC_i & \text{if } MDT_i \leq \tau_i^{OFF} \leq MDT_i + SC_i \\ CSC_i & \text{if } \tau_i^{OFF} > MDT_i + SC_i \end{cases} \quad (2)$$

The minimisation of the objective function is provided with the following constraints:

- System Constraints

- Power balance constraints

$$\sum_{i=1}^{N_g} P_{ih} U_{ih} = P_{dh} \quad (3)$$

- Spinning reserve constraints

$$P_{dh} + P_{rh} - \sum_{i=1}^{N_g} U_{ih} P_{ih} \leq 0 \quad (4)$$

- Unit Constraints

- Generation limits

$$P_i^{min} U_i \leq P_{ih} U_i \leq P_i^{max} U_i \quad (5)$$

- Minimum up-time constraint

$$U_{ih} = 1 \quad \text{for } \sum_{t=h-up_i}^{h-1} U_{it} \leq MUT_i \quad (6)$$

- Minimum down-time constraint

$$U_{ih} = 0 \quad \text{for } \sum_{t=h-down_i}^{h-1} U_{it} \leq MDT_i \quad (7)$$

4. Methodology of resolution

In this paper, four optimization methods are available to solve the unit commitment problem; the first one uses the Particle Swarm Optimization (PSO). This strategy takes into account the advantage of PSO method for solving complex and nonlinear problems. The second method relies on the use of the Tabu Search approach (TS). The use of the TS approach is depicted to the flexibility of storage great memory of optimal solutions offered by this method. The third strategy shows the advantage of the Lagrangian relaxation providing the best convergence speed. Our strategy for solving the Unit Commitment Problem is based on the combination of three optimization methods that are the Particle Swarm Optimization (PSO), the Tabu Search (TS) and Lagrangian Relaxation (LR) method to find a good On / Off states scheduling of each production unit over a period of time leading to obtain a good production cost.

4.1. Particle Swarm Optimization

Particle swarm optimization provides a population based search procedure in which individuals called particles change their positions with time. This method is able to generate high quality of solutions within shorter calculation time and stable convergence characteristic than other stochastic optimization methods. The PSO model consists of a swarm of particles moving, figure 1, in a definite dimensional real-valued space of possible problem solutions [9,28,29].

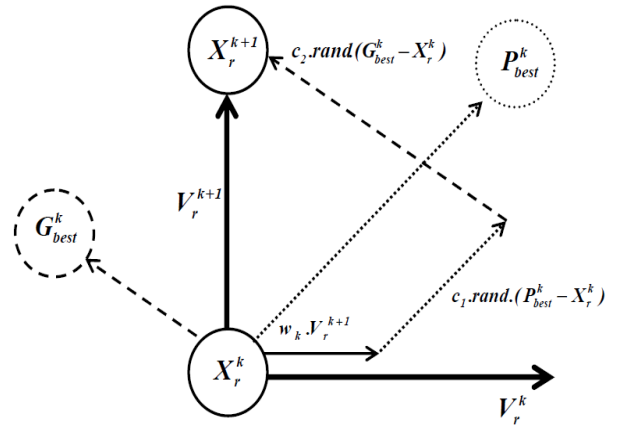


Figure 1. PSO research process

Every particle has a position $X_i = (x_i^1, x_i^2, \dots, x_i^l)$ and a flight velocity $V_i = (v_i^1, v_i^2, \dots, v_i^l)$. Indeed, each particle has its own best positions $P_{ibest} = (P_{ibest}^1, P_{ibest}^2, \dots, P_{ibest}^l)$ and a global best position $G_{best} = (G_{best}^1, G_{best}^2, \dots, G_{best}^l)$. Each time step is characterized by the update of the velocity and the particle is moved to a new position which is the sum of the previous position and the new velocity as shown in the following expression:

$$X_r^{k+1} = X_r^k + V_r^{k+1} \quad (8)$$

The update of the velocity from one particle to another is given by:

$$V_r^{k+1} = w_k \cdot V_r^k + c_1 \cdot rand \cdot (P_{best}^k - X_r^k) + c_2 \cdot rand \cdot (G_{best}^k - X_r^k) \quad (9)$$

Where, c_1 et c_2 are acceleration constant, $rand$ is a uniform random value between $[0,1]$, X_r^k and V_r^k are respectively the position and the velocity of one particle i at iteration k . w_k is the inertia weight factor defined by the following equation:

$$w_k = w_{max} - \frac{w_{max} - w_{min}}{k_{max}} \cdot k \quad (10)$$

Where, w_{max} and w_{min} are the maximum and the minimum inertia weight factors respectively and k_{max} is the maximum number of iterations.

4.2. Tabu search

Tabu search uses a local or neighborhood search procedure to iteratively move from a solution X to a solution X' in the neighborhood of X , until some stopping criterion has been satisfied. To explore regions of the search space that would be left unexplored by the local search procedure, TS modifies the neighborhood structure of each solution as the search progresses [16,17]. The search for the optimal solution corresponding to minimal production cost consists on repeating an iterative process until reaching a stop criterion so as to find one solution neighbor to the optimal one as shown to the following equation:

$$P_{ibest} = P_{best} + \left[(b_i + 2 \cdot c_i \cdot P_{best}) \cdot \left(\frac{P_i^{max} - P_i^{min}}{2} \right) \right] \quad (11)$$

The new neighborhood solutions $N^*(X)$ are determined through the use of memory structures. The search then progresses by iteratively moving from a solution X to a solution X' in $N^*(X)$. To determine the solutions admitted to $N^*(X)$, a tabu list (TL) memory is used, which is a short-term memory containing the solutions that have been visited in the recent past as less than the maximum number of iterations.

4.3. Lagrangian Relaxation

The Lagrangian relaxation solves the Unit commitment problem by relaxing or temporarily ignoring the constraints, power balance and spinning reserve requirements [13,15,30]. Therefore, to transform the complex nonlinear constrained problem into a linear unconstrained problem, we have considered the following Lagrangian function:

$$L(P_{ih}, U_i, \lambda_i) = \sum_{i=1}^{N_g} \sum_{h=1}^H [a_i P_{ih}^2 + b_i P_{ih} + c_i + ST_i(1 - U_{i(h-1)})] U_{ih} + \lambda_i \cdot (P_d - \sum_{i=1}^{N_g} P_i U_{ih}) \quad (12)$$

Where, λ_i is the Lagrangian coefficient.

To establish our strategy, we have considered the partial derivatives of the Lagrangian function (12) with respect to each of the controllable variables equal to zero.

$$\frac{\partial L}{\partial P_{ih}} = \frac{\partial [a_i P_{ih}^2 + b_i P_{ih} + c_i + ST_i(1 - U_{i(h-1)})] U_{ih}}{\partial P_{ih}} - \lambda_i \left(\frac{\partial P_{dh}}{\partial P_{ih}} - U_{ih} \right) = 0 \quad (13)$$

$$\frac{\partial L}{\partial \lambda_i} = P_{dh} - \sum_{i=1}^{N_g} P_i U_{ih} = 0 \quad (14)$$

Equations (13) and (14) represent the optimality conditions necessary to solve equation systems (1) and (3) without using inequality constraints (equations (4) and (5)). Equation (13) can be written as follows:

$$\lambda_i = \frac{\partial [a_i P_{ih}^2 + b_i P_{ih} + c_i + ST_i(1 - U_{i(h-1)})] U_{ih}}{\frac{\partial P_{dh}}{\partial P_{ih}} - U_{ih}} ; i = 1, \dots, N_g ; h = 1, \dots, H \quad (15)$$

4.4. Proposed Strategy

The process of the Unit Commitment problem resolution by the combined use of Tabu search, Particle swarm optimization and Lagrangian Relaxation (TS-PSO-LR) methods is carried out according to the flowchart in Figure 2.

The proposed strategy not only helps to reach the optimal solution as quickly as possible using the speed of the Lagrangian relaxation but also to proceed through PSO method to search effective solutions corresponding to a minimum production cost and this is obtained through a specific determination of the new velocity and then the next best position corresponding to the best amount of generated power produced by each unit when it's in the ON state.

In the proposed method, it's notable that P_{ibest} representing the best information of each particle and the history of each generated power P_{gi} of each production unit is preserved in the list $P_{best} List$. Herein, in spite of the possibility of the PSO method with the solution better than G_{best}^k around P_{best}^k , there is the possibility not to be searched enough that's why we have thought to use the history of P_{ibest}^l in $P_{best} List$.

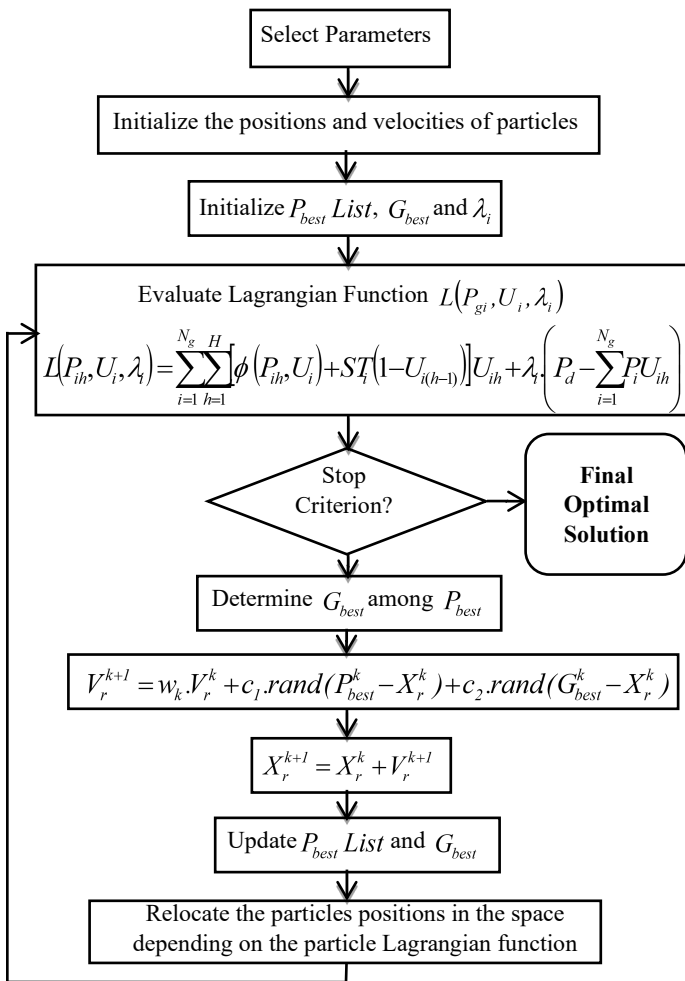


Figure 2. Flowchart of solving the unit commitment problem via Tabu Search, Particle Swarm Optimization and Lagrangian Relaxation

Whenever the particles lose the searching ability when the velocity V_r^k of one particle is very small, the TS-PSO-LR algorithm adapts the other $(P_{ibest}^2, \dots, P_{ibest}^l)$ instead of P_{ibest}^1 to update equation of velocity. This action increases the searching ability and helps to find more optimal solutions enabling a minimal production cost while considering a best unit commitment scheduling.

The proposed TS-PSO-LR strategy differs from other evolutionary computing techniques in providing an acceptable solution within a relatively short time and is likely to lead the search towards the most promising solution area. A step-by-step TS-PSO-LR for the optimization of the UC problem is outlined as follows:

- Step 1:** Initialization data for each unit production
- Step 2:** Create tabu lists $P_{best} List$
- Step 3:** Generate the position and the velocity (X_r^k, V_r^k) of each particle according to equations (8) and (9).
- Step 4:** Evaluation of each particle at an initial power value selected from the limit margins.

- Step 5:** Calculate the production cost function of each particle for each production unit,
- Step 6:** Calculate the Lagrangian coefficient λ according to the expression (15),
- Step 7:** Calculate the objective function of each particle according to equation (1),
- Step 8:** Save the best results in the tabu list $P_{best} List$
- Step 9:** If the stop criterion is satisfactory, the found values are those which corresponds to the desired optimal solution otherwise we return to step 3.

5. Simulation And Results

In order to test the performance of the optimization proposed method; the strategy has been applied to an IEEE electrical network 9 buses [13,15,31], having 3 generators, over a period of 48 hours. The characteristics of the different production units are given in Table 1.

Table 1: Characteristics of production units

U	P_{gimax} (MW)	P_{gimin} (MW)	a	b	c	M U T	M D T	HSC _i (\$)	CSC _i (\$)
1	582	110	0.0756	30.36	582	8	8	4500	9000
2	330	74	0.00031	17.26	970	8	8	5000	10000
3	115	25	0.00211	16.5	680	5	5	560	1120

In this paper, we have considered 48 successive periods in order to establish the temporal evolution of the power demand (Table 2).

Table 2: Amount of load required

H	Load (MW)	H	Load (MW)	H	Load (MW)	H	Load (MW)
1	353.2	13	993.2	25	833.2	37	682.2
2	378.5	14	913.2	26	813.2	38	715.2
3	463.2	15	853.2	27	763.2	39	773.2
4	573.2	16	725.2	28	713.2	40	843.2
5	628.2	17	613.2	29	626.2	41	883.2
6	693.2	18	580.2	30	547.2	42	911.2
7	713.2	19	673.2	31	503.2	43	945.2
8	753.2	20	730.2	32	473.2	44	960.2
9	843.2	21	835.2	33	433.2	45	1001.2
10	925.2	22	945.2	34	533.2	46	1003.2
11	963.2	23	1007.2	35	583.2	47	925.2
12	1013.2	24	893.2	36	627.2	48	823.2

Table 3: Comparative table of the different methods used to solve the UC problem

H	P_{dh} (MW)	Production Cost (\$)				Unit Commitment scheduling			
		LR	PSO	TS	PSO-TS-LR	LR	PSO	TS	PSO-TS-LR
1	353.2	23000	14198	14012	3424	111	111	111	111
2	378.5	25000	12981	15396	13504	111	111	111	110
3	463.2	29000	19729	20582	13261	111	111	111	110
4	573.2	375000	20320	28638	15693	111	110	111	110
5	628.2	845000	25275	33228	19913	110	110	111	110
6	693.2	1278000	32907	39192	28268	110	110	111	110
7	713.2	1432000	33600	41136	19099	110	110	111	111
8	753.2	1770000	43686	45172	25722	110	110	111	111
9	843.2	2688000	44498	50251	32251	110	110	111	111
10	925.2	7267000	46943	51667	41758	111	111	111	111
11	963.2	8441000	52566	52325	46546	111	111	111	111
12	1013.2	10129000	53198	53197	53172	111	111	111	111
13	993.2	9434000	53198	53197	50477	111	111	111	111
14	913.2	6915000	51897	49806	40681	111	111	111	111
15	853.2	2804000	37910	47580	33298	110	111	110	111
16	725.2	1529000	25883	46852	29262	110	111	110	110
17	613.2	758000	21020	46852	25554	110	111	110	110
18	580.2	584000	16014	46852	14909	110	111	110	110
19	673.2	1134000	29433	47666	23751	110	111	110	110
20	730.2	1571000	32618	49493	33494	110	111	110	110
21	835.2	2597000	38861	53197	42276	110	111	110	110
22	945.2	7873000	52140	53197	50791	111	111	111	111
23	1007.2	9918000	53198	53197	52967	111	111	111	111
24	893.2	6349000	51158	53197	37898	111	111	111	111
25	833.2	4797000	35703	53197	45178	111	111	111	111
26	813.2	4327000	36113	48240	28933	111	111	111	111
27	763.2	1861000	28794	47371	24434	111	111	110	111
28	713.2	1432000	25401	46852	29117	111	111	110	111
29	626.2	833000	46373	43893	38959	110	110	110	101
30	547.2	432000	20724	43893	31753	110	110	100	101
31	503.2	260000	24171	43893	24453	110	110	100	101
32	473.2	30000	21804	43893	21221	110	110	100	101
33	433.2	28000	25661	43893	17202	110	110	100	101
34	533.2	33000	29609	46499	30381	111	110	100	101
35	583.2	485000	45736	46499	33614	111	110	101	101
36	627.2	1017000	31241	46499	39093	111	110	101	101
37	682.2	1198000	46649	53197	22191	111	110	101	111
38	715.2	1448000	36247	53197	26763	111	111	111	111
39	773.2	1955000	35234	53197	29056	110	111	111	111
40	843.2	2688000	39180	53197	32182	110	111	111	111
41	883.2	3169000	42243	53197	36731	110	111	111	111
42	911.2	6857000	51986	53197	40051	110	111	111	111
43	945.2	7873000	52083	53197	52034	110	111	111	111
44	960.2	8345000	50398	53197	51313	110	111	111	111
45	1001.2	9709000	53198	53197	52755	110	111	111	111
46	1003.2	9778000	53198	53197	52831	111	111	111	111
47	925.2	7267000	51916	53197	41756	111	111	111	111
48	823.2	2464000	34368	49284	30006	111	111	110	111

Simulation results shown in Table 3 have proved that the adopted optimization methods have helped to establish an appropriate On/Off scheduling operating states of the production units while respecting the time constraints.

Nevertheless, through these methods we have arrived to reach an optimal production cost. Based on Table IV, the production cost found by the hybrid method based on the combination between Tabu search, Particle Swarm Optimization and Lagrangian Relaxation methods (TS-PSO-LR) method among 48 hours is about $1.5800e+06$ \$ lower compared to that obtained through Tabu search ($PC = 2.2350e+06$ \$) and through PSO ($PC = 1.7813e+06$ \$) or through Lagrangian Relaxation ($PC = 1.6405e+08$ \$). This result shows the best performances of the adopted strategy in minimizing the production cost and proves that we can get promising results through hybridization.

Table 4: Production Cost and Time required to converge for each optimized method

	TS	PSO	LR	TS-PSO-LR
Production Cost (\$)	2.2350e+06	1.7813e+06	1.6405e+08	1.5800e+06
Time (s)	1.536 s	2.432s	4539s	127.082 s

Furthermore, concerning the resolution time, TS and PSO methods has presented the best time of convergence to an optimal solution compared to our strategy which requires 127.082 s to reach the global optimum. Besides, through Lagrangian Relaxation method, the unit commitment problem requires a lot of time to converge and this is explained by the complexity of the problem.

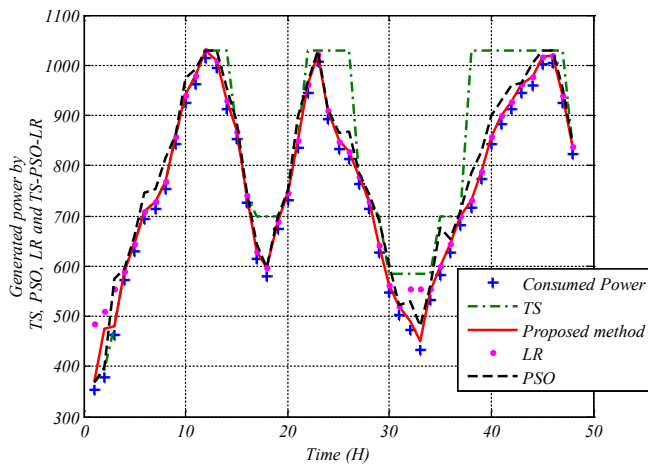


Figure 3. Generated power by TS, PSO, LR and TS-PSO-LR methods

It is interesting to note that the generated powers follow the optimum power quantities provided by the proposed optimization algorithm and the other optimization method. This demonstrates the high performance of the control algorithms adopted for the supervision of the system studied and proves the efficiency of the regulation loops for the different production units. In addition, the strategy adopts a permit to obtain sufficient and rapid planning in

terms of convergence. Indeed, with the particular attention we offer you the considerable choice of input variables to particle swarm optimization method, we have managed via the proposed strategy to optimize the optimal solutions able to reduce the total cost of production.

Based on the results set out in Table 4, we find that our strategy has solved the Unit Commitment problem while addressing a planning of on-off states of production units. Planning that has complied with the constraints of each unit (minimum start-up MUT_i and shut-down times MDT_i). Moreover, we note that the power produced by the most powerful machine (615 MVA) remains unchanged throughout the 48 hours while the other production units vary to produce the amount of power demanded by the network.

Thanks to the simulation results, we can note that the Unit Commitment scheduling found by the hybrid approach has helped to obtain the minimum production cost compared to the other monotonous methods. This proves the main feature of the hybridization technique [32] that allows the combination of the advantages of various methods. Indeed, the tabu search, as table 4 shows, is found the most efficient regarding the convergence time but it has the highest total production cost. As for the Lagrangian relaxation, has allowed to have a very high production cost and requires a considerable time to converge. Whereas, the particle swarm optimization is conducted in a good convergence time but the cost is high compared to our TS-PSO-LR strategy. This comparison reflects the performance of the hybrid strategy, both in production cost and in convergence time.

Therefore, based on Figure 3, we can notice that the total amount of generated power by the production units is very similar to that consumed with a very limited amount of spinning reserve power compared to PSO, TS and LR methods where the generated powers are much higher than the amount requested. This proves the effectiveness of tracking of the consumed power per each hour and shows the performance of the algorithms enabling to get a minimal production cost. Besides, this minimal production cost has been established thanks to a good On/Off statements scheduling set for each production units (Figures 4 and 5). The organization is made through an estimation of the amount of load desired by the electric network, while taking into account of the allowable constraints.

We note that the optimal unit commitment scheduling found by our PSO-TS-LR strategy is characterized by the On status of the powerful unit (615 MVA) [3,6,8,9,13] throughout 48 hours and this is due to the minimum up and the minimum down-time constraints and to the power demand governed for each hour. We note that the unit commitment scheduling of the second production unit (370 MVA) is respecting the during minimum up/down time equal to 8 hours which proves the effectiveness of the control

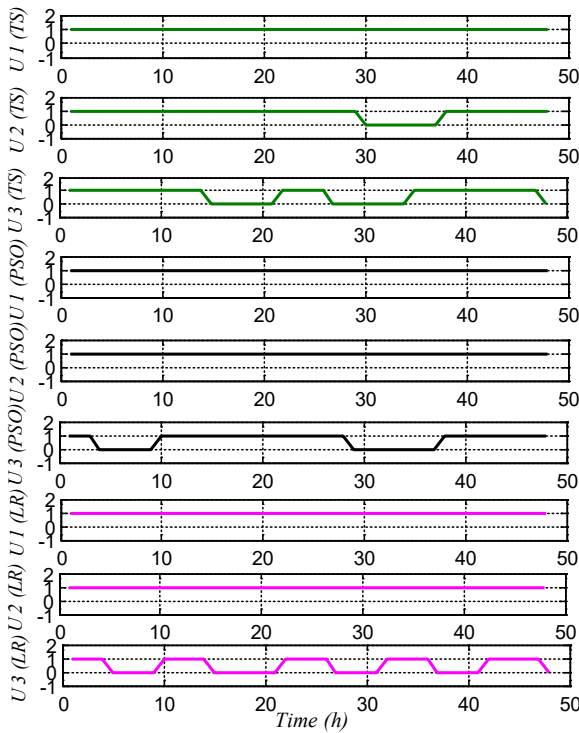


Figure 4. Optimal binary combination of units operation through TS method, PSO method and LR method

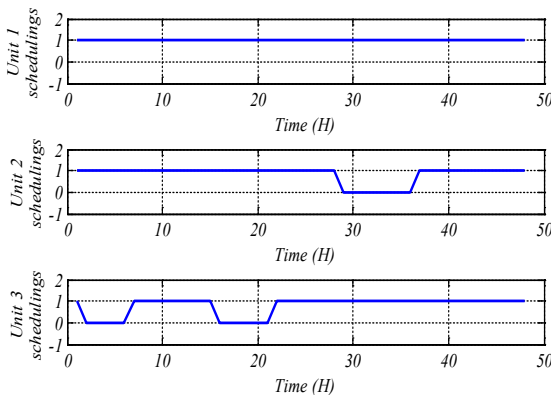


Figure 5. Optimal binary combination of units operation through hybrid TS-PSO-LR method

strategy. The third production unit undergoes Off status according to the production requirement and according to the power demand.

Furthermore, we confirm that our approach has allowed to select precisely the production units that should be available to respond to the load demand of the electrical network over a future period.

In addition, the adopted approach was promising both in terms of convergence to get the best optimal solutions to minimize the production cost and for an efficient unit commitment scheduling for the different production units, figure 6. Our strategy differs from other evolutionary computing techniques in providing an

acceptable solution within a relatively short time and is likely to lead the search towards the most promising solution area.

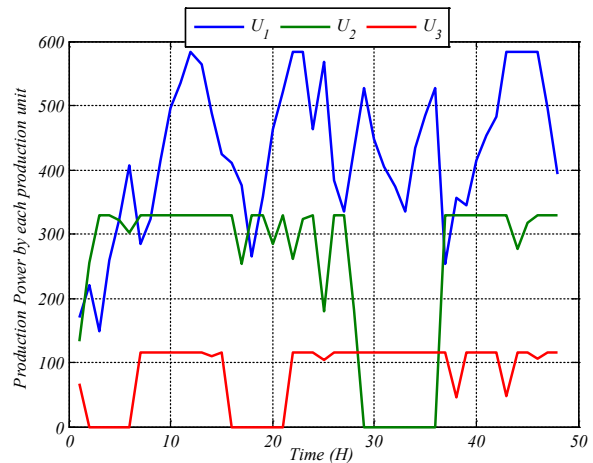


Figure 6. Generated Power by each production unit during 48 hours

6. Conclusion

This work shows the implementation of a new hybrid strategy which combines between Tabu Search, Particle Swarm Optimization and Lagrangian Relaxation. Herein, we have benefited from the rapidity of Lagrangian relaxation method, the storage solution with the memory of Tabu Search method and the flexibility to find optimal solution given by the Particle Swarm Optimization method. The proposed strategy TS-PSO-LR has presented high performances in optimizing the production cost and a capability of convergence to a global optimum as quick as possible compared to meta-heuristic (PSO, TS) and deterministic (LR) methods. In addition, the proposed strategy has ensured a proper unit commitment scheduling leading to get a minimal production cost. The right choice of the initial population suggests the possibility to obtain improvements in execution time. In addition, our strategy provides a fast enough time to converge to the optimal solution; which demonstrates the effectiveness of the adopted strategy compared to that obtained by Lagrangian Relaxation method and Particle swarm optimization methods.

Conflict of Interest

The authors declare no conflict of interest.

References

- [1] Merlin, A., Sandrin, P. (1983) "A new method for unit commitment at Electricity De France", IEEE Trans on Power Apparatus and Systems; 102:1218-25.
- [2] Lin, FT., Kao, C., Hsu, C. (1993) "Applying the genetic approach to simulated annealing in solving some NP-Hard problems". IEEE Trans on Systems, Man and Cybernetics; 23(6):1752-67.
- [3] Sahbi Marrouchi, Moez ben hessine and Souad Chebbi, "New strategy based on Combined Use of Particle Swarm Optimization and Gradient methods to solve the Unit Commitment Problem", 15th IEEE International Conference on Environment and Electrical Engineering (EEEIC), Rome, Italy, 10-13 Jun 2015.

- [4] Chunlin, D., Liu, Y., (2014) "Sample average approximation method for the chance-constrained stochastic programming in the transportation model of emergency management", *Int. J. of Simulation and Process Modelling*, Vol.9, No.4, pp.222 – 227.
- [5] Richard, L. W., David, H. C. (2015) "A comprehensive method for solving finite-state semi Markov processes", *Int. J. of Simulation and Process Modelling*, Vol.10, No.1, pp.89 – 99.
- [6] Rabeh, A., Sahbi, M., Moez, B.H., Houda, J., Souad, C., (2012) "Voltage Control Strategy of an Electrical Network by the Integration of the UPFC Compensator", *International Review On Modelling and Simulation*, vol. 5, no. 1, pp. 380–384.
- [7] Galina, M., Vitaly, B., (2014) "Integrated planning and scheduling built on cluster analysis and simulation optimization", *Int. J. of Simulation and Process Modelling*, Vol.9, No.1/2, pp.81 – 91.
- [8] Moez, B.H., Souad, B.S. (2014) "Accurate Fault Classifier and Locator for EHV Transmission Lines based on Artificial Neural Networks", *Mathematical Problems in Engineering (MPE)*, ID 240565, vol 2014.
- [9] Sahbi, M., Souad, C., (2014) "Combined Use of Particle Swarm Optimization and Genetic Algorithm Methods to Solve the Unit Commitment Problem", 16th International conference on Sciences and Techniques of Automatic control & computer engineering (STA), Monastir, Tunisia.
- [10] Rahul, G., and Sharma, A.K. (2008) "Economic generation and scheduling of power by genetic algorithm", *Journal of Theoretical and Applied Information Technology (JATIT)*.
- [11] Aoki, K., Satoh, T., Itoh, M., Ichimori, T., and Masegi, K. (1987) "unit commitment in a large-scale power system including fuel constrained thermal and pumped-storage hydro", *IEEE Transactions on Power Systems*, Vol. PWRS-2, No. 4.
- [12] Ouyang, Z., Shahidepour, S. M. (1991) "An intelligent dynamic programming for unit commitment application", *IEEE Trans on Power Systems*; 6(3):1203-9.
- [13] Sahbi, M., Souad, C., (2014) "A Comparative Study of Fuzzy Logic, Genetic Algorithm, and Gradient-Genetic Algorithm Optimization Methods for Solving the Unit Commitment Problem", *Mathematical Problems in Engineering*, vol. 2014, Article ID 708275, 14 pages, 2014. doi:10.1155/2014/708275
- [14] Sasaki, H., Watanabe, M., Kubokawa, Yorino, J. N. and Yokoyama, R. (1992) "A solution method of unit commitment by artificial neural network", *IEEE Transactions on Power Systems*, Vol. 7, No. 3.
- [15] Sahbi, M., Souad, C., (2014) "Unit Commitment Optimization Using Gradient-Genetic Algorithm and Fuzzy Logic Approaches", *Complex system modeling and control through intelligent soft computations*, Vol. 319, Springer book.
- [16] Mantawy, A. H., Youssef, Y. L., Magid, L. A., and Shokri, S. Z., Selim, Z. (1998) "A unit commitment by Tabu search," *Proc. Inst. Elect. Eng.Gen. Transm. Dist.*, vol. 145, no. 1, pp. 56–64.
- [17] A. H. Mantawy. L. and Abdel Magid S. Z. Selim, (1998) "A unit commitment by Tabu search", 1998 IEEE Proceedings online no. 1998.
- [18] C. P. Cheng, C. W. Liu, C. C. Liu. (2002) "Unit commitment by annealing-genetic algorithm, *Electrical Power and Energy Systems*, vol. 24 pp 149-158.
- [19] Logenthiran, T. and Dipti, S., (2010) "Particle Swarm Optimization for Unit Commitment Problem", *International Conference on Probabilistic Methods Applied to Power Systems*, pp 642 - 647.
- [20] Charles, G., Christober A. R., (2009) "Neural Based Tabu Search Method for Solving Unit Commitment Problem with Cooling-Banking Constraints", *Serbian Journal of electrical engineering* Vol. 6, No. 1, May 2009, 57-74 UDK: 004.832.2, 2009.
- [21] Senthil, K. and Palanisamy, V., (2006) "A New Dynamic Programming Based Hopfield Neural Network to Unit Commitment and Economic Dispatch" *International Conference on Industrial Technology*, pp 887 – 892, Mumbai.
- [22] Chuan-Ping Cheng, Chih-Wen Liu, and Chun-Chang Liu, "Unit Commitment by Lagrangian Relaxation and Genetic Algorithms", *IEEE Transactions on Power Systems*, vol. 15, NO. 2, MAY 2000.
- [23] C. Christober Asir Rajan and M. R. Mohan, "An Evolutionary Programming-Based Tabu Search Method For Solving The Unit Commitment Problem," *IEEE Transactions on Power Systems*, VOL. 19, NO. 1, FEBRUARY 2004.
- [24] S. Senthil Kumar and V. Palanisamy, "A New Dynamic Programming Based Hopfield Neural Network to Unit Commitment and Economic Dispatch", *IEEE Transactions on Power Systems*, 2006.
- [25] Charles Gnanakkan Christober Asir Rajan, "Neural Based Tabu Search Method for Solving Unit Commitment Problem with Cooling-Banking Constraints", *Serbian Journal of electrical engineering* Vol. 6, No. 1, May 2009, 57-74 UDK: 004.832.2, 2009.
- [26] Christober C. Asir Rajan, "Genetic algorithm based tabu search method for solving unit commitment problem with cooling — banking constraints", *Journal of electrical engineering*, vol. 60, NO. 2, 2009.
- [27] Alma Ademovic, Smajo Bisanovic and Mensur Hajro, "A Genetic Algorithm Solution to the Unit Commitment Problem Based on Real-Coded Chromosomes and Fuzzy Optimization", *IEEE Transactions on Power Systems*, 2010.
- [28] Zhao, B., Guo, C. X., Bai, B. R., and Cao, Y. J. (2006) "An improved particle swarm optimization algorithm for unit commitment", *International Journal of Electrical Power and Energy Systems*, vol. 28, no. 7, pp. 482–490.
- [29] Raglend, I. J., Raghuvveer, C., Avinash, G. R., Padhy, N. P., and Kothari, D. P. (2010) "Solution to profit based unit commitment problem using particle swarm optimization", *Applied Soft Computing Journal*, vol. 10, no. 4, pp. 1247–1256.
- [30] Chuan, P. C., Chih, W. L., and Chun, C. L., (2000) "Unit Commitment by Lagrangian Relaxation and Genetic Algorithms", *IEEE Transactions on Power Systems*, vol. 15, NO. 2.
- [31] Sahbi, M., Souad, C., (2014) "New strategy based on Fuzzy-Logic Approach to Solve the Unit-Commitment Problem", *International Conference on Control, Engineering & Information Technology (CEIT)*, Monastir, Tunisia.
- [32] Letizia, N.; Alessandro, C., Carlos, A., Rafael, D., (2014) "Hybrid approach for container terminals performances evaluation and analysis", *Int. J. of Simulation and Process Modelling*, Vol.9, No.1/2, pp.104–112.